

*For low viscosity materials such as
instantaneous adhesive agent*

Optimum for high-precision dispensing in small amount



Simple tube setting

- High precision dispensing without troublesome adjustment, easily feasible by anybody.

Elimination of liquid drip

- Liquid drip eliminated and bubble generation reduced even for low-viscosity liquid materials.

Simple Maintenance

- Only tube for liquid-exposed section.



Simple and secure tube placement achieved

- Long life of liquid material feeding tube thanks to our original tube installation mechanism.
- "Digital Timer" allowing for dispensing time setting with simple operation equipped.
- A dispensing pen with a remote switch for manual work (option) is available.

SPECIFICATIONS

Item name	Rotary-type tubing dispenser
Model	MT-410
Dispensing method	Rotary tubing system
Dispensing mode	Timed mode/manual mode
Dispensing time setting range	0.01 to 99.99s
Range of rotational speed setting	0 to 120rpm
Input signal	External dispensing signal
Output signal	Dispensing completion signal
Rated power supply and frequency	AC 100 to 240 V, 50/60 Hz
Power consumption	25 W
Compatible standards	CE-marking (EMC and low voltage directives), EU RoHS
External dimensions	W188×D208×H75mm (projection portion excluded)
Weight	3.0kg

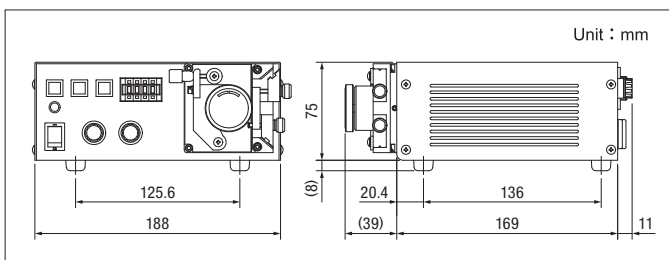
APPLICABLE DISPENSING MATERIALS

Anaerobic low viscosity materials (such as instantaneous adhesive & UV hard-type adhesive) low viscosity epoxy resin, silicone oil, etc.

APPLICATIONS

Adhesion, potting, coating, dot dispensing, line dispensing, injection, filling, etc.

EXTERNAL DIMENSION DRAWINGS



Dispensing pen for tubing dispenser



Item name	Model	Code length
Dispensing pen [LS-NH3 type16 4pin]	LS-NH3-1604P	1m

LIST OF PTFE TUBES

A wide range of tubes is available to meet your liquid viscosity and dispensing volume needs.

Use our black PTFE tube if you will be dispensing UV cured material.

PTFE tubes for tubing dispenser			
Model name	Tube outside diameter (φ)	Tube inside diameter (φ)	Tube length
TT-32	0.75	0.25	10m
TT-30	0.76	0.30	10m
TT-28	0.84	0.38	10m
TT-26	0.92	0.46	10m
TT-24	1.06	0.56	10m
TT-22	1.18	0.68	10m
TT-21	1.31	0.81	10m
TT-20	1.46	0.86	10m
TT-19	1.56	0.96	10m
TT-18	1.67	1.07	10m
TT-17	1.79	1.19	10m
TT-16	1.95	1.35	10m
TT-15	2.10	1.50	10m
TT-14	2.28	1.68	10m
TT-13	2.53	1.93	10m
TT-12	2.76	2.16	10m
TT-11	3.01	2.41	10m
TT-10	3.29	2.69	10m

Black PTFE tubes for tubing dispenser (for UV curing materials)			
Model name	Tube outside diameter (φ)	Tube inside diameter (φ)	Tube length
TT-30B	0.76	0.30	10m
TT-28B	0.84	0.38	10m
TT-26B	0.92	0.46	10m
TT-24B	1.06	0.56	10m
TT-22B	1.18	0.68	10m
TT-21B	1.31	0.81	10m
TT-20B	1.46	0.86	10m
TT-19B	1.56	0.96	10m
TT-18B	1.67	1.07	10m
TT-17B	1.79	1.19	10m
TT-16B	1.95	1.35	10m
TT-15B	2.10	1.50	10m
TT-13B	2.53	1.93	10m
TT-12B	2.76	2.16	10m
TT-11B	3.01	2.41	10m
TT-10B	3.29	2.69	10m



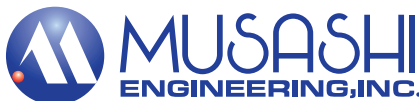
Safety precautions

Please read the instruction manual carefully before use to ensure correct and safe usage.

*These specifications are subject to change without any notice.

*The copyright of this catalog belongs to our company. Reproduction and distribution of the pictures, illustrations and any other information in this catalog to any other media without prior written permission are strictly prohibited; doing so will result in copyright infringement.

MUSASHI ENGINEERING, INC. (headquarters) is certified and registered according to the ISO 9001 Quality Management System and the ISO 14001 Environmental Management System.



World Leading Dispenser
MUSASHI ENGINEERING, INC.

HEAD OFFICE

8-7-4, Shimorenjaku, Mitaka-shi, Tokyo, 181-0013, Japan TEL:(81)422-76-7111 / FAX:(81)422-76-7122

BRANCH

TOKYO, OSAKA, NAGOYA, SENDAI, FUKUOKA, SAITAMA, NAGANO, EAST-KANTO, AKITA, KANAZAWA

SINGAPORE	10 Ubi Crescent #05-24 Ubi Techpark Lobby B Singapore 408564 TEL:(65)6258-2422 / FAX:(65)6258-4844
THAILAND	No.36 Soi Bangna-Trad25, Bangnanuea, Bangna, Bangkok 10260 Thailand TEL:(66)2-022-9015 / FAX:(66)2-769-5450
INDONESIA	Jl. MH. Thamrin, Robson Square, Block A-15, Lippo Cikarang, Bekasi 17550, Jawa Barat, Indonesia TEL:(62)21-8990-5005 / FAX:(62)21-8990-5004
GERMANY	Marcel-Breuer-Str. 15, D-80807 Munich, Germany TEL:(49)89-321996-06 / FAX:(49)89-321996-07
KOREA	(902 No. 9 F. #C, Korea Bio Park.) 700, Daewangpangyo-ro, Bundang-gu, Seongnam-si, Gyeonggi-do 13488, Korea TEL:(82)31-702-3811 / FAX:(82)31-702-3881
TAIWAN	8F-2, No. 158, Sec. 2, Gongdao 5th Road, Hsinchu, Taiwan 30070 TEL:(886)3-572-9200 / FAX:(886)3-572-9300

CHINA

HONG KONG	Unit 1706, 17/F., Greenfield Tower, (South) Concordia Plaza, No.1 Science Museum Road, T.S.T.East, Kowloon, H.K. TEL:(852)2620-5799 / FAX:(852)2620-5771
SHANGHAI	Room 102, Building 4, No.1999 Shenkun Road, Minhang District, Shanghai, China TEL:(86)21-6446-7881 / FAX:(86)21-6446-7882
SHENZHEN	1st floor 102, building 3 of Winlead, Fada road, Bantian Street, Longgang District, Shenzhen TEL:(86)755-8346-6822 / FAX:(86)755-8346-6866
TIANJIN	Room 1601, Sino Ocean International Center, No. 40 Huachang Road, Hedong District, Tianjin TEL:(86)22-5856-2051
SUZHOU	Room 1010, No.188 Wang Dun Road, GENWAY BUILDING, Suzhou City Industrial estate Distric, Jiangsu, CHINA TEL:(86)512-6878-4428 / FAX:(86)512-6878-4438