

Realizes high productivity with simultaneous 2 head dispensing.



**FAD 5000**

Evolution of the series

Underfill



Non-contact  
Dispenser

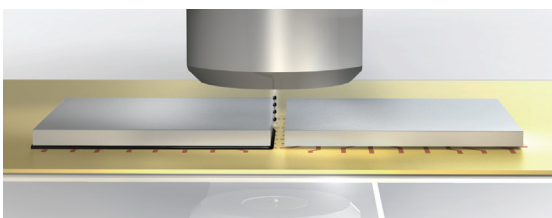
Adaptable to cutting-edge semiconductor processes  
WLP/PLP/Chiplet/Heterogeneous chip integration.

Equipped with non-contact dispenser *SuperJet*.

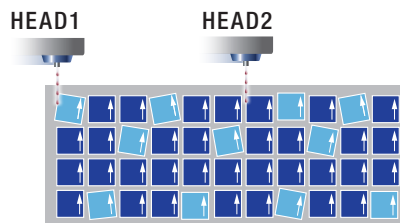
Multi-heads Independent control, Dispensing weight automatic correction.

The latest UI contributing to manpower saving.

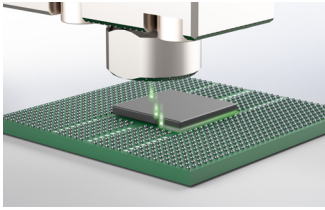
**Micro-dispensing** (SuperJet + high-precision positioning)  
Enables dispensing in the industry's highest level KOZ.



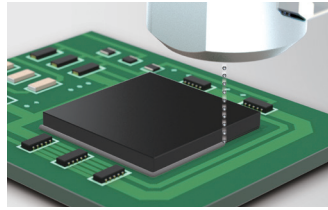
**Controls dispensing positions freely with independent multi-head control.**



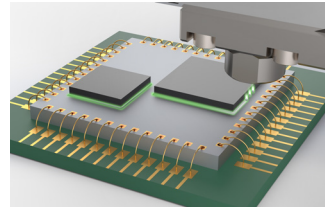
# Applications



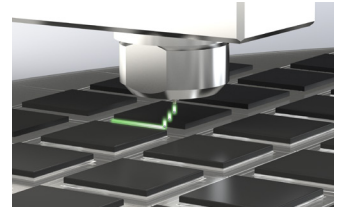
IPD



PoP



CoC



CoW

## Combination examples Optional



LD/ULD Specifications



Wafer Handler Specifications

## User-Friendly

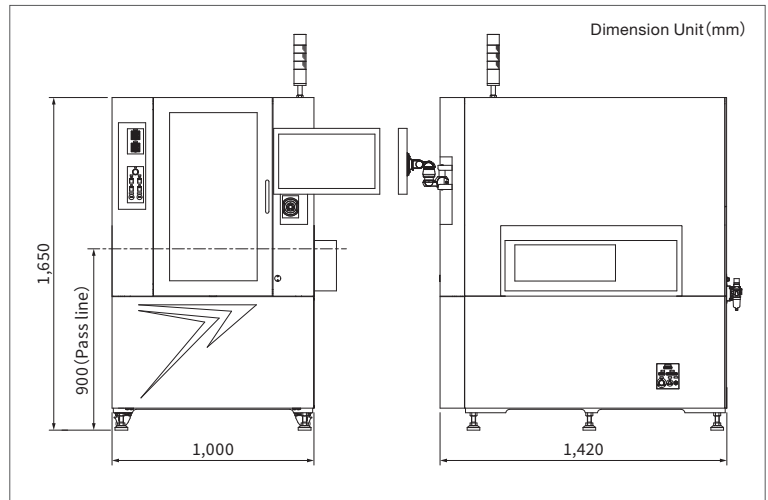
- Cutting-edge UI guiding users to the next operation  
Easy for anyone to operate
- Recipe registration without stopping production  
Offline Tool



## Specifications

Product name	DISPENS MASTER
Model	FAD5700
Control Method	PC/PLC Control (SMEMA compliant)
Operating Speed X/Y	Max: 1,500 mm/sec
Operating Speed Z	Max: 500 mm/sec
Repeat Positioning Accuracy X/Y	±0.002 mm
Number of Dispense Units	Max: 2
Applicable Workpiece Dimensions L/W/t *1 Lane	50 to 315 mm/50 to 315 mm/0.5 to 2 mm
Number of Lanes	1 or 2
Number of Stages	3
Rated Voltage and Frequency	AC180 V to AC264 V 1Φ 50/60 Hz
Power Consumption	MAX: 10 KW
Dimensions	W1,000×D1,420×H1,650 mm
Weight	950 kg
Languages	Japanese, English, Chinese

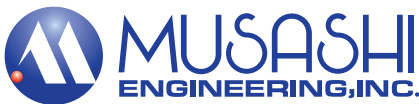
## External dimensions



**Safety precautions**  
Please read the instruction manual carefully before use to ensure correct and safe usage.

\*These specifications are subject to change without any notice.  
\*The copyright of this catalog belongs to our company. Reproduction and distribution of the pictures, illustrations and any other information in this catalog to any other media without prior written permission are strictly prohibited; doing so will result in copyright infringement.

MUSASHI ENGINEERING, INC. (headquarters) is certified and registered according to the ISO 9001 Quality Management System and the ISO 14001 Environmental Management System.



### World Leading Dispenser MUSASHI ENGINEERING, INC.

**HEAD OFFICE**  
8-7-4, Shimorenjaku, Mitaka-shi, Tokyo, 181-0013, Japan TEL: (81)422-76-7111 / FAX: (81)422-76-7122  
**BRANCH**  
TOKYO, OSAKA, NAGOYA, SENDAI, FUKUOKA, SAITAMA, NAGANO, EAST-KANTO, AKITA, KANAZAWA

**SINGAPORE** 10 Ubi Crescent #05-24 Ubi Techpark Lobby B Singapore 408564  
TEL: (65)6258-2422 / FAX: (65)6258-4844

**THAILAND** No.36 Soi Bangna-Trad25, Bangnanuea, Bangna, Bangkok 10260 Thailand  
TEL: (66)2-022-9015 / FAX: (66)2-769-5450

**INDONESIA** Jl. MH. Thamrin, Robson Square, Block A-15, Lippo Cikarang, Bekasi 17550, Jawa Barat, Indonesia  
TEL: (62)21-8990-5005 / FAX: (62)21-8990-5004

**GERMANY** Marcel-Breuer-Str. 15, D-80807 Munich, Germany  
TEL: (49)89-321996-06 / FAX: (49)89-321996-07

**KOREA** (902 No. 9 F. #C, Korea Bio Park.) 700, Daewangpangyo-ro, Bundang-gu, Seongnam-si, Gyeonggi-do 13488, Korea  
TEL: (82)31-702-3811 / FAX: (82)31-702-3881

**TAIWAN** 8F-2, No. 158, Sec. 2, Gongdao 5th Road, Hsinchu, Taiwan 30070  
TEL: (886)3-572-9200 / FAX: (886)3-572-9300

**CHINA**

**HONG KONG** Unit 1706, 17/F., Greenfield Tower, (South) Concordia Plaza, No.1 Science Museum Road, T.S.T.East, Kowloon, H.K.  
TEL: (852)2620-5799 / FAX: (852)2620-5771

**SHANGHAI** Room 102, Building 4, No.1999 Shenkun Road, Minhang District, Shanghai, China  
TEL: (86)21-6446-7881 / FAX: (86)21-6446-7882

**SHENZHEN** 1st floor 102, building 3 of Winlead, Fada road, Bantian Street, Longgang District, Shenzhen  
TEL: (86)755-8346-6822 / FAX: (86)755-8346-6866

**TIANJIN** Room 1601, Sino Ocean International Center, No. 40 Huachang Road, Hedong District, Tianjin  
TEL: (86)22-5856-2051

**SUZHOU** Room 1010, No.188 Wang Dun Road, GENWAY BUILDING, Suzhou City Industrial estate Distric, Jiangsu, CHINA  
TEL: (86)512-6878-4428 / FAX: (86)512-6878-4438