

HOT MELT Super Jet

NEW

Faster, more detailed

Line width Dispensing speed
Approx. **1/2**, *Approx.* **2x!** * Compared with conventional type

3D seal dispensing



■ Reactive hot melt (PUR)

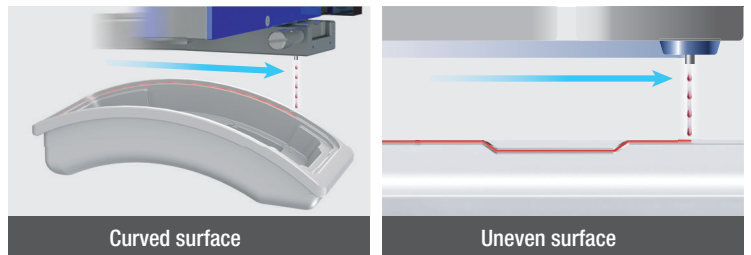
Complete sealing with stable, continuous dispensing

For workpieces with thin edges



Delivers **ultra-fine line dispensing without breaks** to narrow areas

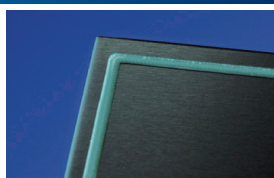
For workpieces with curved and uneven surfaces



With non-contact JET dispensing, **nozzle gap control is not required over curved and uneven surfaces**

MUSASHI advantages

Maintain constant line width around corners



Synchro Speed™ function PAT.P

Varied line width with constant dispensing speed



Automatic channel switching function

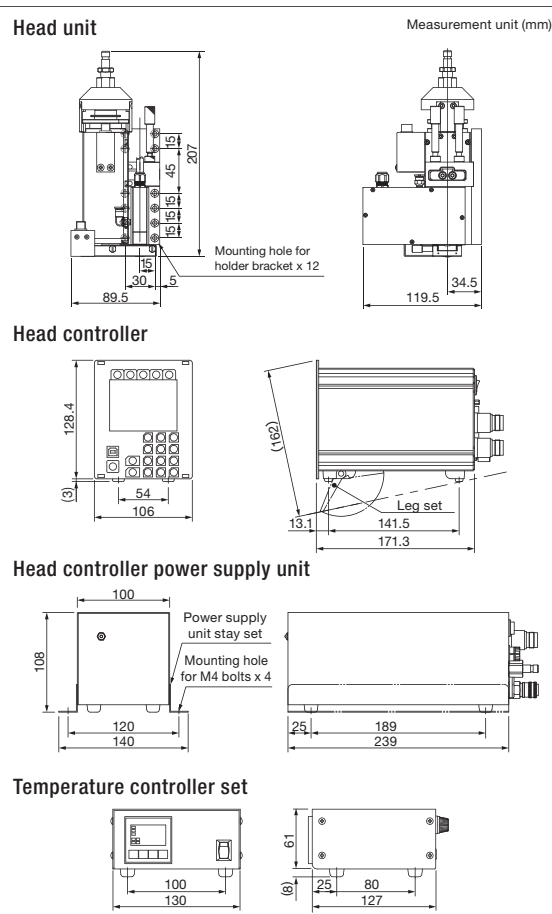
Superior durability
of consumable parts

Smooth
disassembled
cleaning work

Specifications

Product name	Non-contact JET dispenser HOTMELT SUPERJET
Model	MJET-S-HM
Dispense controller's model	MJET-S-CTR-RM(Head controller) MJET-S-HM-TCU-02-SET(Temperature controller x2 sets)
Dispense controller power supply unit model	MJET-S-CTR-RM-PW-A
Dispensing system	Jet system
Control system	Microcomputer digital control system
Applicable liquid materials	Reactive hot melt
Applicable syringe	30mL syringe
Temperature setting range	MAX:180°C
Dispensing modes	LINE/MAN, LINE/SET, DOT/MAN, DOT/SET
Operating frequency	300Hz (maximum burst frequency: 500Hz)
Main functions	Synchro Speed™, multi-channel presets, Japanese-English-Chinese display switch, USB communications, RS-232C communications
Channel number	100CH
Input signals	Dispensing, channel switching, dispensing mode switching
Output signals	Dispensing completion, in-dispensing, error, alarm, busy, power on
Rated voltage and frequency	AC100-240V 50/60Hz (Head controller) AC100V 50/60Hz (Temperature controller)
Power consumption	MAX:75W (Head controller) MAX:9W (Temperature controller)
Conformity standards	EU RoHS
Dispense head unit dimensions	W89.5×D119.5×H207mm
Dispense head unit weight	1.5kg
Head controller dimensions	W106×D171.3×H128.4mm Suits 19-inch sub-rack (3Ux21HP)
Head controller weight	1.6kg
Controller power supply unit dimensions	W140 x D239 x H108mm
Controller power supply unit weight	2.0kg
Temperature controller dimensions	W130×D127×H69mm
Temperature controller weight	1040g

Outside drawings



Cartesian robot with 3D alignment function

IMAGE MASTER™ 350PC Smart



Information on related products



130 °C
heat-resistant syringe
PSY30FH2-P series



180 °C
heat-resistant syringe
PSY30FH-P series



Safety precautions

Please read the instruction manual carefully before use to ensure correct and safe usage.

*These specifications are subject to change without any notice.

*The copyright of this catalog belongs to our company. Reproduction and distribution of the pictures, illustrations and any other information in this catalog to any other media without prior written permission are strictly prohibited; doing so will result in copyright infringement.

MUSASHI ENGINEERING, INC. (headquarters) is certified and registered according to the ISO 9001 Quality Management System and the ISO 14001 Environmental Management System.



<http://www.musashi-engineering.co.jp/english/>



World Leading Dispenser MUSASHI ENGINEERING, INC.

HEAD OFFICE

8-7-4, Shimorenjaku, Mitaka-shi, Tokyo, 181-0013, Japan TEL:(81)422-76-7111 / FAX:(81)422-76-7122

BRANCH

TOKYO, OSAKA, NAGOYA, SENDAI, FUKUOKA, SAITAMA, NAGANO, EAST-KANTO, AKITA, KANAZAWA

SINGAPORE	10 Ubi Crescent #05-24 Ubi Techpark Lobby B Singapore 408564 TEL:(65)6258-2422 / FAX:(65)6258-4844
THAILAND	No.12 Soi Bangna-Trad 25, Bangnanuea, Bangna, Bangkok 10260 Thailand TEL:(66)2-022-9015 / FAX:(66)2-769-5450
INDONESIA	Jl. MH. Thamrin, Robson Square, Block A-15, Lippo Cikarang, Bekasi 17550, Jawa Barat, Indonesia TEL:(62)21-8990-5005 / FAX:(62)21-8990-5004
GERMANY	Marcel-Breuer-Str. 15, D-80807 Munich, Germany TEL:(49)89-321996-06 / FAX:(49)89-321996-07
KOREA	(902 No. 9 F. #C, Korea Bio Park.) 700, Daewangpangyo-ro, Bundang-gu, Seongnam-si, Gyeonggi-do 13488, Korea TEL:(82)31-702-3811 / FAX:(82)31-702-3881
TAIWAN	8F-2, No. 158, Sec. 2, Gongdao 5th Road, Hsinchu, Taiwan 30070 TEL:(886)3-572-9200 / FAX:(886)3-572-9300

CHINA

HONG KONG Unit 1706, 17/F., Greenfield Tower, (South) Concordia Plaza, No.1 Science Museum Road, T.S.T.East, Kowloon, H.K.
TEL:(852)2620-5799 / FAX:(852)2620-5771

SHANGHAI A-120 Room, No.525 Xian Feng Street (No.55 Jin Yu Road), Min Hang, Shanghai, China
TEL:(86)21-6446-7881 / FAX:(86)21-6446-7882

SHENZHEN 1st floor 102, building 3 of Winlead, Fada road, Bantian Street, Longgang District, Shenzhen
TEL:(86)755-8346-6822 / FAX:(86)755-8346-6866

TIANJIN Room 1601, Sino Ocean International Center, No. 40 Huachang Road, Hedong District, Tianjin
TEL:(86)22-5856-2051

SUZHOU Room 1010, No.188 Wang Dun Road, GENWAY BUILDING, Suzhou City Industrial estate Distric, Jiangsu, CHINA
TEL:(86)512-6878-4428 / FAX:(86)512-6878-4438